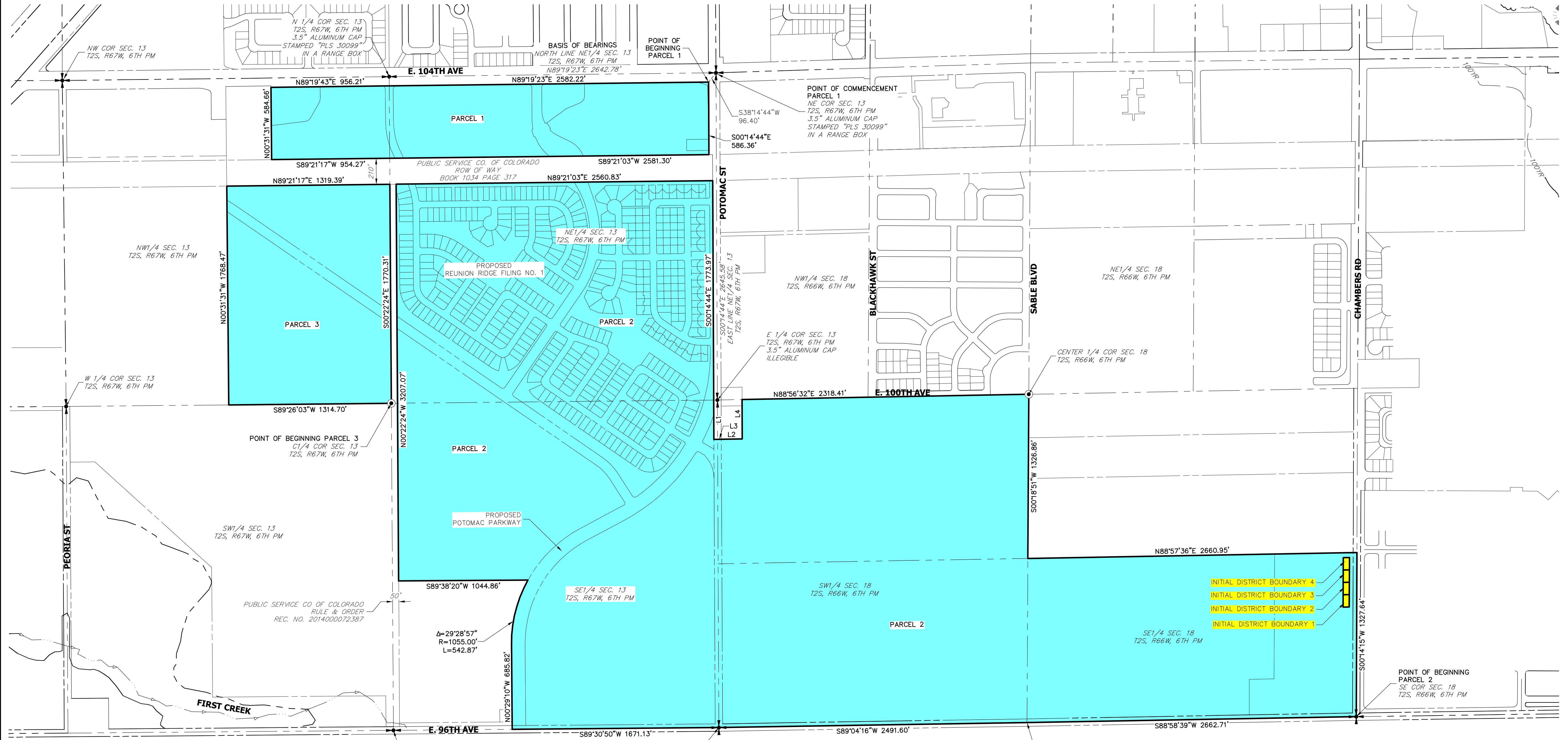
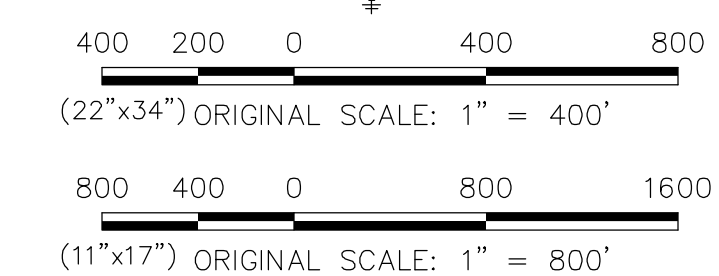
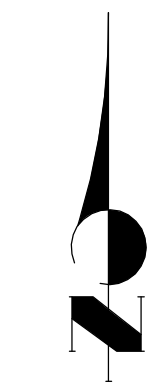


# REUNION RIDGE METROPOLITAN DISTRICT NO. 1 - 4



LINE TABLE		
LINE	BEARING	DISTANCE
L1	S00°15'47"E	318.43'
L2	N88°56'32"E	170.00'
L3	N88°56'32"E	60.01'
L4	N00°15'47"W	318.00'



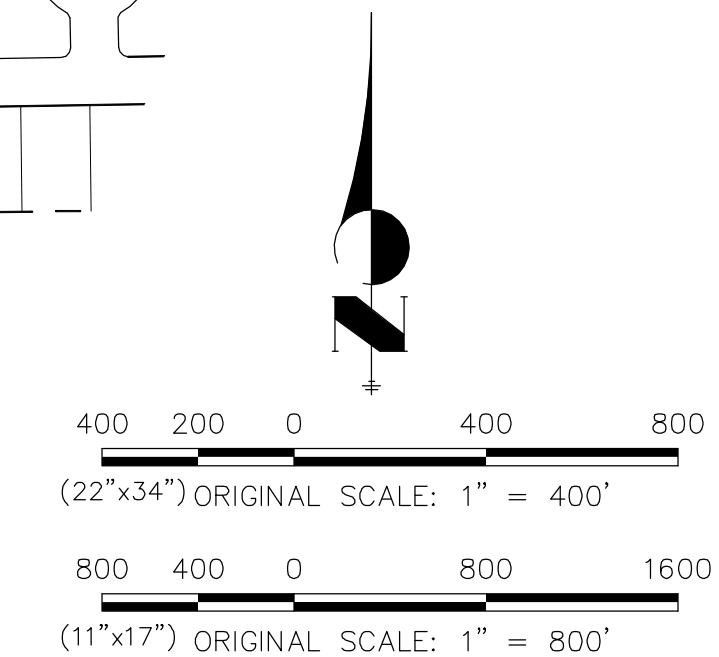
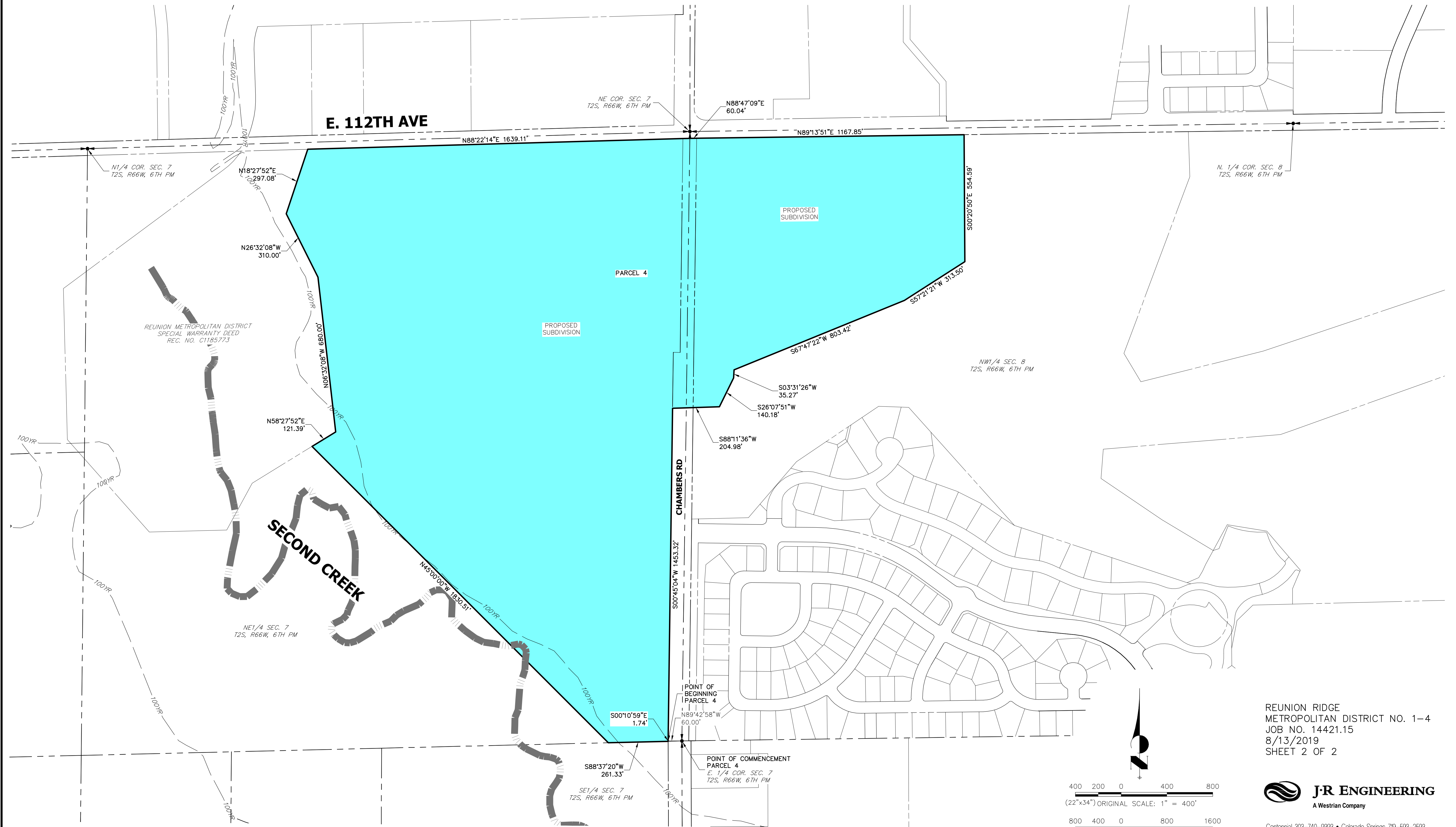
REUNION RIDGE  
 METROPOLITAN DISTRICT NO. 1-4  
 JOB NO. 14421.15  
 8/13/2019  
 SHEET 1 OF 2



Centennial 303-740-9393 • Colorado Springs 719-593-2593  
 Fort Collins 970-491-9888 • www.jrengineering.com

X:\144000\_ah\1442115\Drawings\Presentations\Annual District Boundary Map\Proposed Districts\Reunion Ridge Metro District 1-4\Map.dwg, 2/26/2019, 10:27:22 AM, Vgland

# REUNION RIDGE METROPOLITAN DISTRICT NO. 1 - 4



REUNION RIDGE  
METROPOLITAN DISTRICT NO. 1-4  
JOB NO. 14421.15  
8/13/2019  
SHEET 2 OF 2



Centennial 303-740-9393 • Colorado Springs 719-593-2593  
Fort Collins 970-491-9888 • www.jrengineering.com

X:\144000\_ah\1442115\Drawings\Presentations\Annual District Boundary Map\Proposed Districts\Reunion Ridge Metro District 1-4\1442115-RRMD1-4-Map.dwg, 2/23/2019 10:27:29 AM, Vgland